



CITY COUNCIL OF PARLIER SPECIAL MEETING

DATE: Thursday, November 7, 2019
TIME: 6:30 PM
PLACE: Council Chambers
1100 East Parlier Avenue
Parlier, CA 93648

CALL TO ORDER/WELCOME:

Roll Call: Mayor Alma M. Beltran, Mayor Pro-Tem Trinidad Pimentel, Councilwoman Diane Maldonado, Councilman Noe Rodriguez, City Clerk Dorothy Garza.

FLAG SALUTE: Mayor Alma M. Beltran

REGULAR BUSINESS:

1. **SUBJECT:** Consideration and Necessary action on having a Band & DJ at the New Year Dance in the Community Center

RECOMMENDATION: Staff recommends council approve both the Band Califas and DJ Bambino for the New Year Dance. Califas submitted a quote on November 4, 2019 and DJ Carlos submitted a quote on November 4, 2019.

2. **SUBJECT:** Consideration and Necessary action council approve Powerhouse Home Improvement Inc. Contract to install a Roof at Academy of Excellence.

RECOMMENDATION: Staff recommends approval of the contract from Powerhouse Home Improvement Inc. to replace the Academy of Excellence roof.

ADJOURNMENT

ADA NOTICE

In compliance with the American with Disabilities Act, if you need special assistance to participate in this meeting, please contact the City Clerk at (559) 646-3545 ext. 227. Notification 48 hours prior to the meeting will enable the City to make arrangements to ensure accessibility to this meeting.

DOCUMENTS

Any writings or documents provided to a majority of the City Council regarding any item on this agenda will be made available for public inspection at the front counter at City Hall located at 1100 East Parlier Avenue, Parlier, CA during normal business hours. In addition, most documents are posted on the City's website at <http://parlier.ca.us>.



AGENDA ITEM:

#1

MEETING DATE:

11/07/2019

DEPARTMENT:

Administration

REPORT TO CITY COUNCIL

SUBJECT:

For the consideration and necessary action on having a Band & DJ at the New Year Dance in the Community Center.

RECOMMENDATION:

Staff recommends council to approve both the Band Califas & DJ Bambino for the New Year Dance. Califas submitted a quote on November 04, 2019 and DJ Carlos submitted a quote on November 04, 2019.

BACKGROUND:

We have received a total of three different Bands and/or DJ quotes.

- Califas: \$2,500 with sound & lighting.
- DJ Bambino: \$400 for 5 hours (7p-12p). To include DJ sound & lighting, can also provide MC services as needed.
- Grupo Riezzgo: \$2,800 for 4 hours (7:30p-12:30p) + Table and entrance for 10. Sound system not to be shared with other Group or DJ.

FINANCIAL IMPACT:

Budget not to exceed \$4,999.00 – Special Events Fund

PREPARED BY:

Eva Beltran
Event Coordinator

APPROVED BY:

Sonia Hall
City Administrator



AGENDA ITEM: #2
MEETING DATE: 11/07/19
DEPARTMENT: City Administration

REPORT TO CITY COUNCIL

SUBJECT:

Approve Powerhouse Home Improvement Inc. Contract to Install a Roof at Academy of Excellence

RECOMMENDATION:

Staff recommends approval of the contract from Powerhouse Home Improvement Inc. to replace the Academy of Excellence roof.

BACKGROUND:

The Academy of Excellence needs a complete roof replacement. At this point, the facility will not be able to sustain another winter without the roof replacement. We did get several other quotes and Powerhouse Home Improvement Inc. came in as the lowest bid but still maintaining high quality material.

The CA State Department of Education is doing a site visit on December 4, 2019. It is imperative that we have the roof completed prior to the site visit.

FISCAL IMPACT:

The total cost for the project is \$40,000. This will be paid through the Academy of Excellence maintenance budget that is included in their annual allocation from the CA Department of Education.

Prepared By:

Sonia Hall
City Administrator

POWERHOUSE HOME IMPROVEMENT INC.

DOING ONE HOME IMPROVEMENT AT A TIME!

8961 N. Chance Ave.

Fresno, CA 93720

Cell: 559-360-3039

State License No. 1054162

Rep. Name: Nathaniel Cid & Eddie Ceballos

PROPOSAL/CONTRACT

DATE: 10-09-2019

PLEASE PRINT NEATLY

Bill to: Parlier Academy of Excellence Phone: 559-646-6800

Job Address: 8000 S. Mendocino Ave. Parlier, CA 93648

Email: dcardenas@parlier.ca.us

WORK PERFORMED: Tear-off existing roof.

We hereby propose to furnish all the material and perform all labor necessary to complete the following:

- Provide certificates of insurance for General Liability and Workers Compensation coverage.
- Remove existing roof down to solid/space sheeting and dispose of all the debris.
- Install new WEATHERLOCK FLEX (Self-Sealing Ice & Water Barrier). In specific areas only.
- Install new TITANIUM UDL50 Synthetic Roofing Underlayment over solid sheeting.
- Install new pipe flashings/roof jacks, paint to match color of the roof.
- Install new pre-painted low-profile air vents to bring roof ventilation up to code.
- Install new pre-painted enamel based valley metal. *Color to match color selection of shingles.*
- Install new pre-painted 2x2 drip-edge metal. *Please circle color: BLACK, BROWN, OR WHITE.*
- Install new OWENS CORNING DURATION COOL ROOF SHINGLES. Title 24 Compliant.
- Install new VENTSURE RIGID RIDGE ROLL.
- Install new DECORIDGE HIP & RIDGE SHINGLES.
- Clean area of all roofing related debris.
- Obtain City/Of _____ re-roofing permit(s) and all required inspections.
- Labor guaranteed for Ten (10) years.

FINANCE PRICE: \$ _____ Install COOL ROOF Comp. Shingles. Approve/Initial: _____

CASH PRICE: \$ 40,000 Install COOL ROOF Comp. Shingles. Approve/Initial: _____

COLOR SELECTION: _____ Approve/Initial: _____

Sales Notes:

Scope of work includes tearing-off flat-roof areas where Air Conditioning units sit.

WE WILL BE INSTALLING: POLYGLASS ELASTOBASE SHEET, POLYGLASS POLYFLEX SMOOTH TORCH, AND POLYGLASS POLYFRESKO G, TITLE 24 WHITE TORCH.

Note: If any asbestos that is found, or additional work requested will be an additional cost.

NOTE: On all repair contracts, Contractor is not responsible for interior damages due to water damage. **POWERHOUSE HOME IMPROVEMENT INC.** is not responsible for any bracing, smoke detectors or code upgrades such as structural, mechanical, plumbing and/or electrical and hazardous materials required by any governing bodies before, during or after inspections. **POWERHOUSE HOME IMPROVEMENT INC. IS NOT RESPONSIBLE FOR ANY STUCCO/SIDING DAMAGE WHERE EXISTING ROOFING MATERIAL IS ADHERED OR OVERLAPED ON THE STUCCO. POWERHOUSE HOME IMPROVEMENT INC. IS NOT RESPONSIBLE FOR ANY SIGNAL PROBLEMS ON SATELLITE OR ANTENNA.** If any leak occurs, you must notify **POWERHOUSE HOME IMPROVEMENT INC.** WITH IN 12 HOURS to prevent excessive damage. All materials are guaranteed to be as specified, and the above work is to be performed in accordance with the drawing and specifications submitted for above work and completed in a workman like manner. **A NON-REFUNDABLE DEPOSIT OF 10% OF THE CONTRACT TOTAL OR \$1,000.00, WHICHEVER IS LESS IS REQUIRED AT THE TIME OF CONTRACT SIGNING. ALL CONTRACTS ARE SUBJECT TO A 3 DAY CANCELLATION AFTER ACCEPTANCE. CANCELLATIONS MUST BE GIVEN IN WRITING AND PRIOR TO WORK PERFORMED. THE REMAINING CONTRACT BALANCE WILL BE REQUIRED THE DAY OF COMPLETION. WE DO NOT ACCEPT CREDIT CARDS.**

Exclusions

Contractor will not be responsible for any damage due to leakage from existing valley flashing, air conditioning, and/or vent problems that have not been otherwise specified in writing. Leakage cause by owner's abuse, and act of God or other circumstances out of the Contractors control will not be covered under warranties. All material is guaranteed to be as specified, and the above work and completed in a substantial workman like manner for the sum due upon completion of work specified above. **POWERHOUSE HOME IMPROVEMENT INC.** retains all excess material. Homeowner will be responsible for any interior code upgrades, such as smoke detectors. Any alteration or deviation from above specifications involving extra cost will be executed only upon written orders, and will become an extra charge over and above this estimate.

All agreements are contingent upon strikes, accidents, or delays beyond the control of the contractor. Owner is to carry fire, tornado or other necessary insurance upon above work. Workers Compensation and General Liability Insurance on the above work is to be taken out by **POWERHOUSE HOME IMPROVEMENT INC.**

**** NOTE** THIS PROPOSAL MAY BE WITHDRAWN IF NOT ACCEPTED WITHIN 14 DAYS.**

(Building Material Prices vary from week to week)

"Notice to Owner" (section 7018.5 Contractors License Law)

Under the Mechanics Lien Law, any Contractor, Subcontractor, Laborer, Supplier or other person who helps to improve your property and is not paid for his labor, services of material, has a right to enforce his claim against your property. Under the law, you may protect yourself against such claims by filing, before commencing such work or improvement, an original contract for the work of improvement or a modification thereof, in the office of the county recorder of the county where the property is located and requiring that the contractor's payment bond be recorded in such office. Said bond shall be in the amount not less than 50% of the contract, be conditioned for the payment in full of the claims of all persons furnishing labor, services, equipment or materials for work described in said contract.

The above prices, specifications and conditions are satisfactory and are hereby accepted. You are authorized to do the work specified. Payment will be made as outline above.

SIGNATURE: _____ DATE: _____

SUBMITTED BY: _____ DATE: _____

State License No. 1054162

CONTRACTORS ARE REQUIRED TO BE LICENSED AND REGULATED BY THE CONTRACTORS STATE LICENSE BOND. ACCEPTANCE OF THE PROPOSAL/ CONTRACT: the above prices, specifications and conditions are satisfactory and are hereby accepted freely and voluntarily, **POWERHOUSE HOME IMPROVEMENT INC.** is authorized to do the work as specified. **Project must be started within 30 days of signed date (unless start date is postponed due to weather) fail to do so POWERHOUSE HOME IMPROVEMENT INC. has the right to terminate the Contract.**

ELASTOBASE™

SBS (ELASTOMERIC) BASE SHEET

PRODUCT DESCRIPTION

Elastobase is an SBS (elastomeric) modified bitumen roofing membrane base sheet. This quality membrane is reinforced with a high quality fiberglass mat to ensure strength and excellent dimensional stability to the product. Elastobase exhibits superior waterproofing and weathering physical properties.

The top and bottom surfaces are available in sand or factory applied burn-off film.

Elastobase is intended for use as a base ply or interply membrane and designed to be installed in mechanically attached, hot asphalt, heat-welded, or as part of cold-applied system. When the top of membrane is surfaced with film, Elastobase can be used as a base sheet in self-adhered systems.

TYPICAL APPLICATIONS

- Use as a base or interply membrane in multi-ply low-slope roofing assemblies.
- Fastened anchor sheet, hot asphalt, cold adhesives or heat fused.
- New roofing, re-roofing and flashing reinforcement.

FEATURES AND BENEFITS

- Versatile for multiple application methods.
- Fiberglass mat enhances strength and dimensional stability.
- Provides a strong and durable substrate for other roofing membrane plies.

TECHNICAL DESCRIPTION*

Physical Properties	ASTM Method	ASTM Value	Typical Performance
Peak Load at 0°F [-18°C]:	D5147	70 lbf/in [12.3 kN/m]	121 lbf/in [21.2 kN/m] - MD 102 lbf/in [17.9 kN/m] - XMD
Elongation at Peak Load at 0°F [-18°C]:	D5147	1%	5 - MD 5 - XMD
Peak Load at 73°F [23°C]:	D5147	30 lbf/in [5.3 kN/m]	78 lbf/in [13.7 kN/m] - MD 45 lbf/in [7.9 kN/m] - XMD
Elongation at Peak Load at 73°F [23°C]:	D5147	2%	5% - MD 4% - XMD
Ultimate Elongation at 73°F [23°C]:	D5147	3%	33% - MD 39% - XMD
Tear Strength at 73°F [23°C]:	D5147	35 lbf [156 N]	150 lbf [667 N] - MD 79 lbf [351 N] - XMD
Low Temperature Flexibility [maximum]:	D5147	0°F [-18°C]	PASS
Dimensional Stability, max %:	D5147	0.50%	0.1% - MD 0.1% - XMD
Compound Stability [pass/fail]:	D5147	215°F [102°C]	PASS

*The properties in this table are "as manufactured" unless otherwise noted



PRODUCT DATA**

Coverage (Approx) 200 sq ft (18.5 m²)
Weight (Approx) 106 lbs (47.6 kg)
Thickness (Nominal) 80 mils (2.0 mm)
Roll Size 65'8" x 39 3/8" (20 m x 1 m)
Rolls/Pallet.....20

**All values are nominal at time of manufacturing

APPLICABLE STANDARDS

- ASTM D6163, Type I, Grade S
- UL Classified
- FM Approved
- ICC ESR-2018
- Florida Building Code
- Miami-Dade County Approved
- Texas Department of Insurance



PRODUCT CODES

- EB2OPP (FILM/FILM)
- EB2OSP (SAND/FILM)
- EB2OPS (FILM/SAND)



www.polyglass.us

ELASTOBASE™

SBS (ELASTOMERIC) BASE SHEET

APPLICATION INSTRUCTIONS

Elastobase is intended to be used as a base sheet or interply for new or re-roof applications. Elastobase may be applied directly to non-combustible substrates. Elastobase requires the installation of an interply and/or compatible granulated cap sheet to complete the roofing system.

- Apply over clean, dry, dust and debris-free substrates. Prime concrete decks and required substrates prior to application with PG 100 Fast-Drying Asphalt Primer. Consult Polyglass Technical Service if alternate primer is allowed.
- When re-roofing, remove all prior roofing materials down to a clean, dust free substrate. Remove unused or abandoned through-roof penetrations.
- All substrates shall be designed with proper expansion devices.
- Wood decks shall have all joints cross blocked and/or properly supported.
- Installation of Elastobase should not adversely affect the ventilation of existing construction.
- Do not apply directly to existing shingles or other unacceptable roof coverings.
- While heat welding Elastobase:
 1. Start at the lowest point of the roof.
 2. Unroll the material and allow it to relax as membrane is positioned prior to installation.
 3. Install with traditional torch roofing techniques ensuring proper heating of the roofing material.
 4. Do not overheat to expose or compromise the reinforcement.
 5. Position successive rolls using a minimum 6" endlap and 3" side lap. Bleed out of SBS asphalt should be 1/8" to 1/4" at all seams.
 6. Laps may be lightly rolled with a 4" to 6" wide roller to ensure lap is fused.
- Details and flashing may be installed using hot asphalt, cold application or torch techniques. Check project details for proper installation requirements.
- For detailed drawings and recommended installation procedures of typical roof segments, such as drip edge and T-joint conditions, please refer to our website at, www.polyglass.us.

MANUFACTURING FACILITIES

- Fernley, NV
- Hazleton, PA
- Waco, TX
- Winter Haven, FL

CORPORATE HEADQUARTERS

Polyglass U.S.A., Inc.
1111 West Newport Center Drive
Deerfield Beach, FL 33442
www.polyglass.us

General Line: (888) 410-1375
(954) 233-1330

Customer Service: (800) 222-9782
Technical Service: (866) 802-8017

Questions? technical@polyglass.com

Product Disclaimer: Unless otherwise incorporated into or part of a supplemental manufacturer's warranty, Polyglass warrants its product(s) against manufacturing defects in its product that directly results in leakage for a period of 2 years.

Refer to safety data sheet (SDS) for specific data and handling of our products. All data furnished refers to standard production and is given in good faith within the applicable manufacturing and testing tolerances.

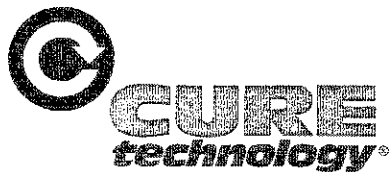
Polyglass U.S.A., Inc., reserves the right to improve and change its products at any time without prior notice. Polyglass U.S.A., Inc. cannot be held responsible for the use of its products under conditions beyond its own control. For most current product data and warranty information, visit www.polyglass.us



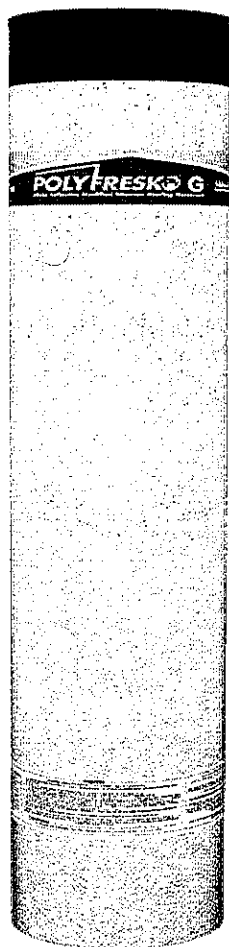
www.polyglass.us

POLYFRESH G

Highly Reflective White Modified Bitumen Roofing Membrane



When Form Meets Function



Featuring our patented CURE Technology®, Polyfresko® G cap sheets take modified bitumen cool roof membranes to the next level. This highly reflective, white granule APP cap sheet not only meets or exceeds the most stringent national building and energy codes published, Polyfresko G features the benefits and performance only achievable with CURE Technology's revolutionary thin film finish.

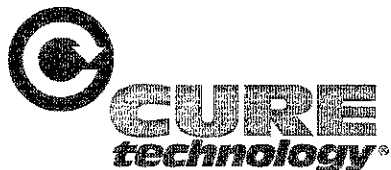
Polyfresko G cap sheets are manufactured using a proprietary All Season APP compound suitable for many types of installation methods. Reinforced with heavy duty polyester, Polyfresko G provides exceptional strength, puncture resistance and exceeds the physical properties and performance required for ASTM D6222.

WARRANTY

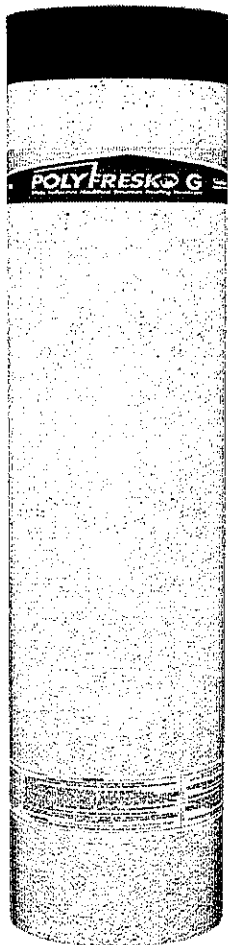
We stand behind our products with the most reliable warranties in the industry. Our warranty programs provide extended protection, assuring the optimum system performance is guaranteed. We continue to safeguard our customers' assets after the installation with our warranty support.

POLYFRESH G

Highly Reflective White Modified Bitumen Roofing Membrane



When Form Meets Function



Featuring our patented CURE Technology®, Polyfresko® G cap sheets take modified bitumen cool roof membranes to the next level. This highly reflective, white granule APP cap sheet not only meets or exceeds the most stringent national building and energy codes published, Polyfresko G features the benefits and performance only achievable with CURE Technology's revolutionary thin film finish.

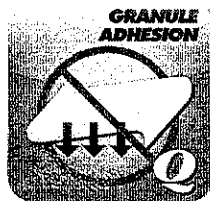
Polyfresko G cap sheets are manufactured using a proprietary All Season APP compound suitable for many types of installation methods. Reinforced with heavy duty polyester, Polyfresko G provides exceptional strength, puncture resistance and exceeds the physical properties and performance required for ASTM D6222.

WARRANTY

We stand behind our products with the most reliable warranties in the industry. Our warranty programs provide extended protection, assuring the optimum system performance is guaranteed. We continue to safeguard our customers' assets after the installation with our warranty support.

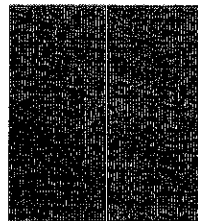
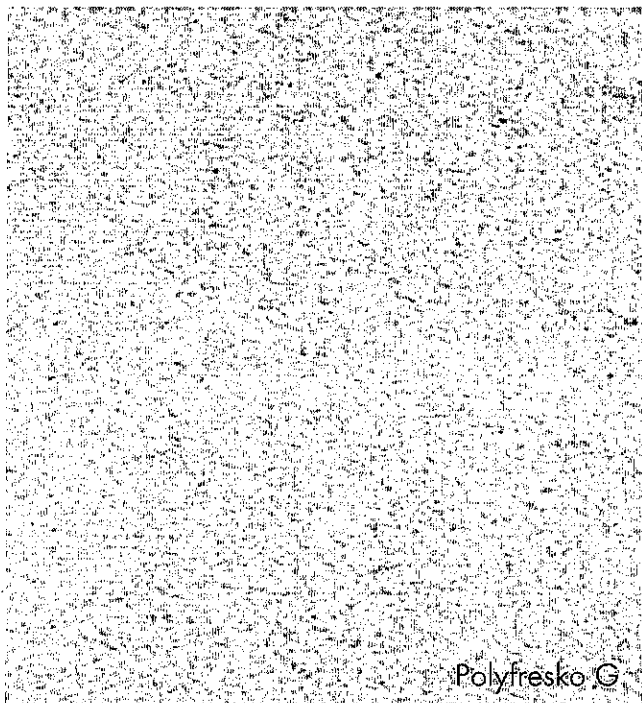
WHY **POLYFRESKO G** WITH **CURE?** *technology*

- © **Aesthetics** - With minimal "torch scorch" and Cure Technology Detail and Repair Finish to surface all seams and details, a Polyfresko G roof maintains its bright white appearance over time
- © **Highly Reflective, Environmentally Friendly** – Eligible for LEED® points as part of qualified cool roof system
- © **Stain-free** – Resistant to surface blemishes, dirt pickup, and discoloration over time.
- © **Safe and secure** – As part of a Polyglass multi-ply system, Class A Fire Rating with extended warranties available

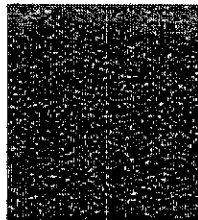


AFTER 20 YEARS

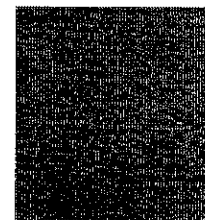
Product samples shown after approximately 20 years of simulated accelerated weathering.



Competitor A



Competitor B

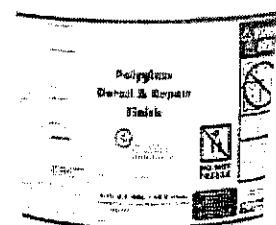


Competitor C

ACCESSORIES

Polyglass Detail & Repair Finish

- Displays the same reflective properties and appearance of Polyfresko membranes
- Specifically designed for application to membrane lap areas, details, and repairs
- Can be thinly applied with spray, roll or brush
- Estimated product required for typical Polyfresko roofs - 1 gal for 6-7 rolls installed
- Available in 1-gallon cans and 5-gallon pails

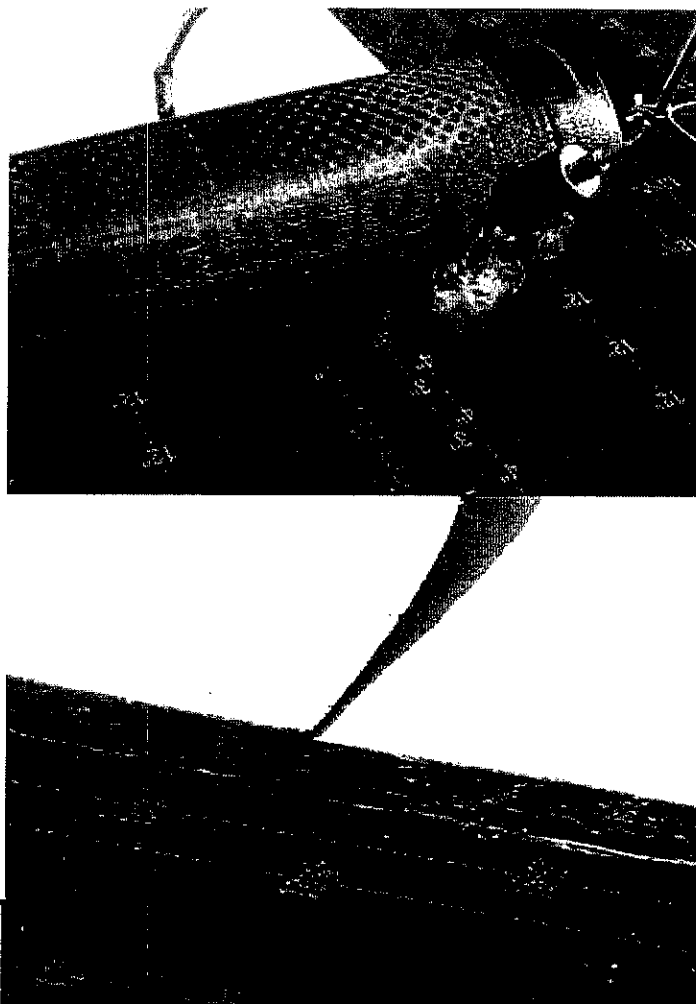



APPROVED SUBSTRATES

- Various base membranes
- Concrete
- DensDeck®
- SECUROCK®

CODE APPROVALS

- ASTM D6222, Type I
- Miami Dade Code Compliance
- Factory Mutual Approved
- UL Classified for use in class A, B or C roofs, as listed in the latest UL "Roofing Materials and Systems Directory"
- ICC ESR-2018
- Florida Building Code
- Texas Department of Insurance
- Energy Star Certified
- Can be used to comply with 2016 Title 24 Part 6 Cool Roof Requirements



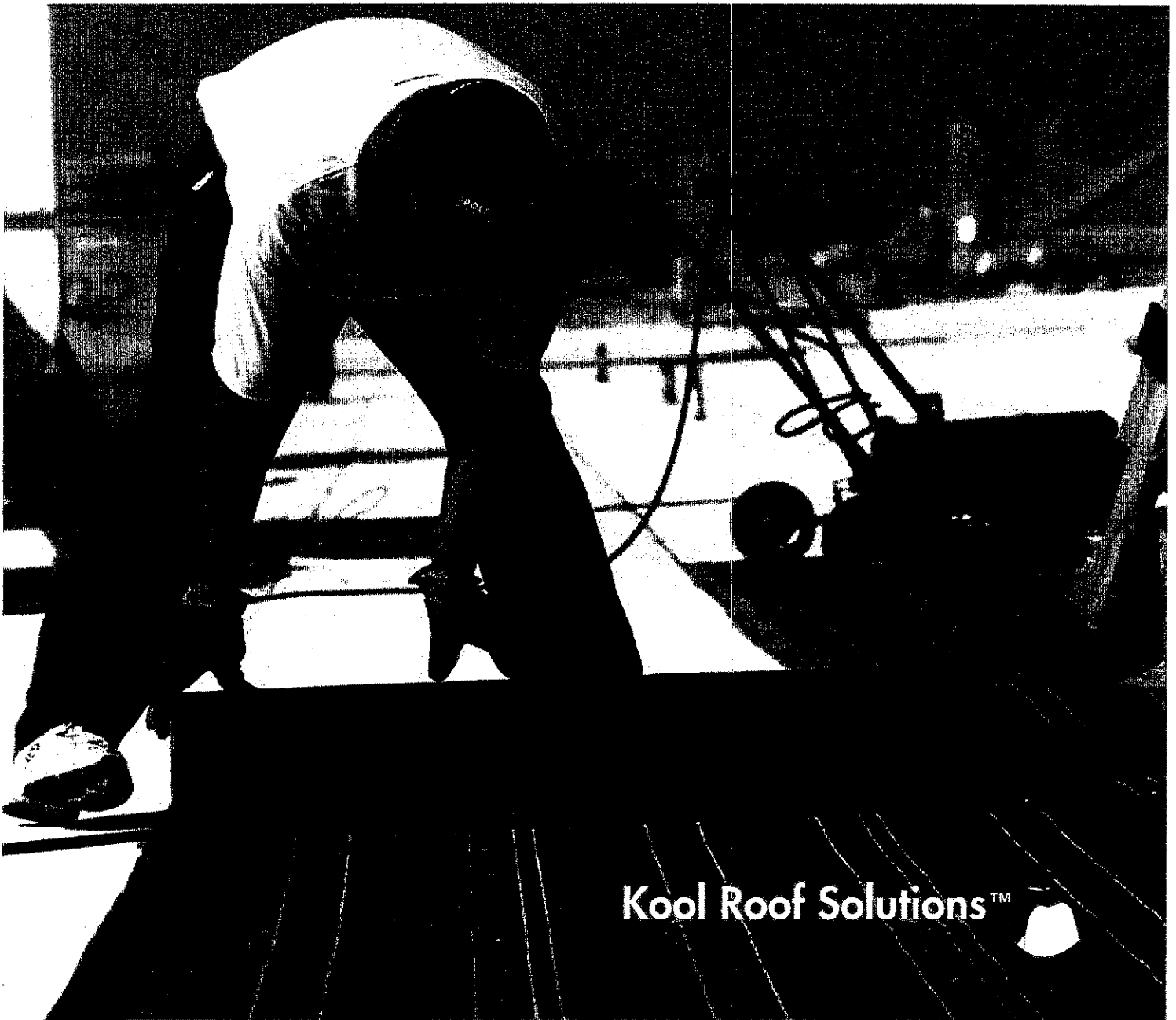
		<u>Initial</u>	<u>Weathered</u>
	Solar Reflectance	0.77	0.68
	Thermal Emittance	0.90	0.88
	Rated Product ID Number	0616-0011a	
	Licensed Seller ID Number	0616	
	Classification	Production Line	
Cool Roof Rating Council ratings are determined for a fixed set of conditions, and may not be appropriate for determining seasonal energy performance. The actual effect of solar reflectance and thermal emittance on building performance may vary.			
Manufacturer of product stipulates that these ratings were determined in accordance with the applicable Cool Roof Rating Council procedures.			

Solar Reflectance Index (SRI) Initial: 96 Weathered: 83



*DensDeck and DensDeck Prime are trademarks of Georgia Pacific.

ROOFING NEVER LOOKED SO **KOOL!**

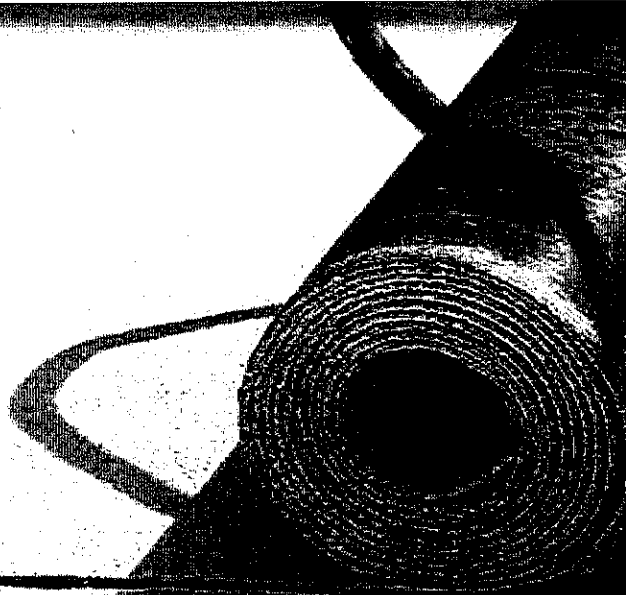


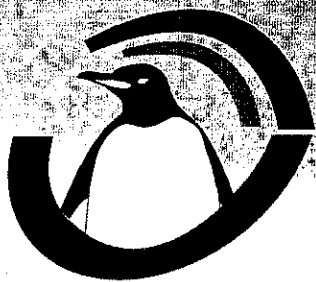
Kool Roof Solutions™



CURE TECHNOLOGY

Membranes manufactured with CURE Technology exhibit exceptional granule retention, as well as minimal staining and scuff resistance. This factory-applied thin film treatment (independently lab and field tested) provide for membranes with increased longevity and improved durability without compromising the ease of installation performance expected from Polyglass products.





POLYGLASS U.S.A., Inc.

1111 W Newport Center Drive
Deerfield Beach, FL 33442

(888) 410-1375

Fax (954) 418-4433

polyglass.us

pgmarketing@polyglass.com

Customer Service: (800) 222-9782

Technical Support: (866) 802-8017

